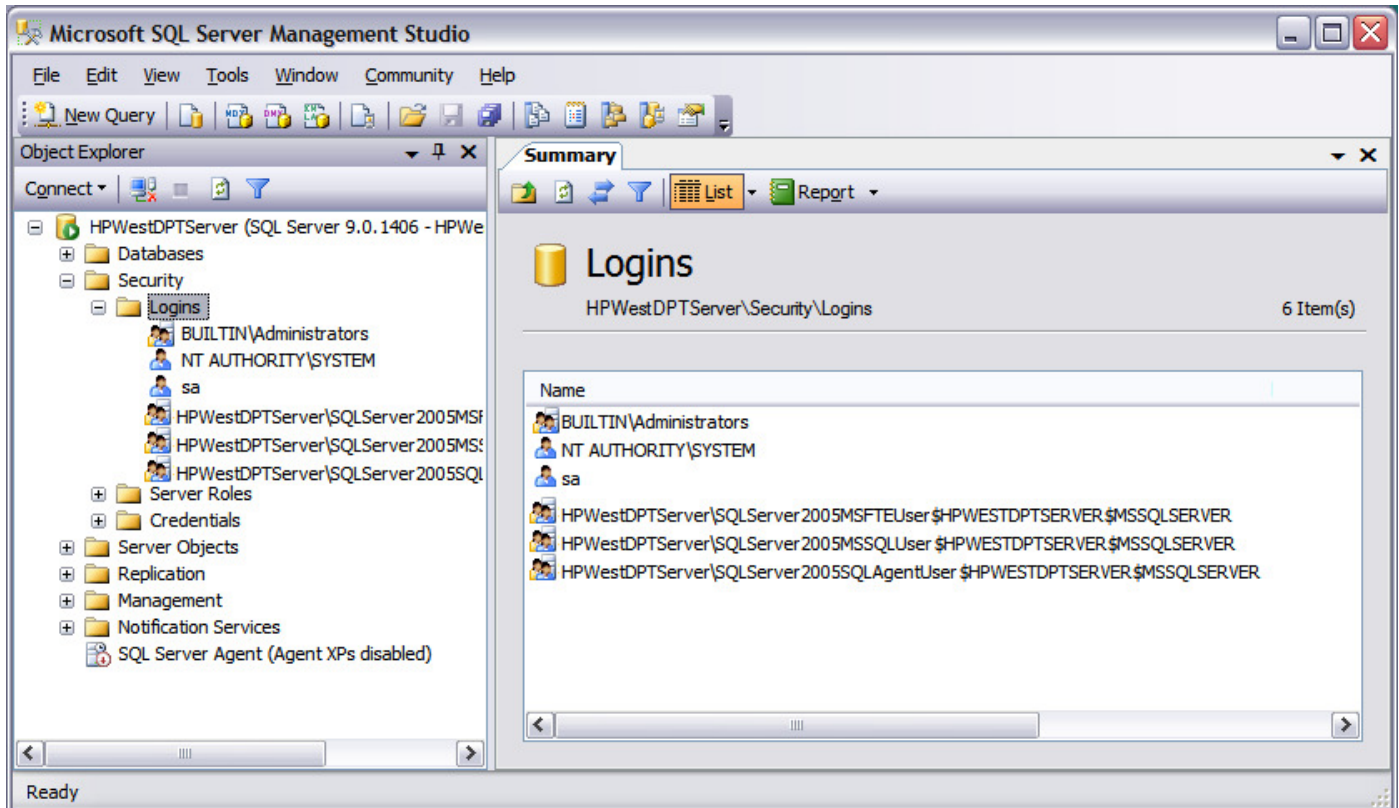


## TymeTrax Software - Configuring SQL Server Application Role

### SQL Server Login Role

SQL Server requires a security login, also called an Application Role, in order to allow its users to open, use and create a SQL database. All users must have network access to the SQL Server (physical access), then the following steps must be done by a SQL Server administrator using Microsoft SQL Server Management Studio.

*Please note that the screenprints below demonstrate these steps using SQL Server 2005; however the steps are the same for SQL Server 2008 and SQL Server EXPRESS 2008.*



Open Microsoft SQL Server Management Studio and log into the server using the authentication method you setup when installing SQL.

In the Object Explorer window on the left, expand the "Security" folder, then right-click on the "Logins" folder and choose "New Login" to display the dialog on the next page.

## Configuring SQL Server Application Role - continued

Please note that your application has a default value for each of these fields; however choosing a different Login Name and Password than the default greatly increases security for the SQL Server. It also means you will need to update your SQL settings in your application. Please see your users guide for more information.

On the “General” page, enter the login name.

Then check the “SQL Server authentication” option and enter and confirm the password.

The screenshot shows the 'Login - New' dialog box with the following configuration:

- Login name: FirstSuiteClient
- Authentication:  SQL Server authentication
- Password: [masked]
- Confirm password: [masked]
- Enforce password policy:
- Enforce password expiration:
- User must change password at next login:
- Mapped to certificate:
- Certificate name: [empty]
- Mapped to asymmetric key:
- Key name: [empty]
- Default database: master
- Default language: <default>

Click on the “Server Roles” page and check the “sysadmin” checkbox on the right to give full access rights to this role.

The screenshot shows the 'Server Roles' page with the following configuration:

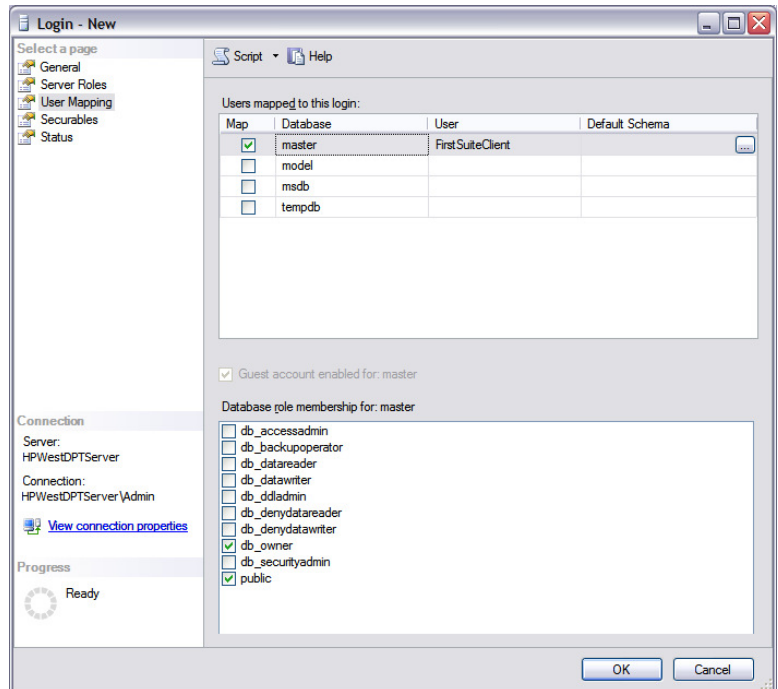
- Server role is used to grant server-wide security privileges to a user.
- Server roles:
  - bulkadmin
  - dbcreator
  - diskadmin
  - processadmin
  - securityadmin
  - serveradmin
  - setupadmin
  - sysadmin

## Configuring SQL Server Application Role - continued

Click on the “User Mapping” page and check the “master” Map checkbox in the upper list.

The Database Role Membership setting for master will be enabled; the “public” option should already be checked; check the “db\_owner” option as well.

Click “OK” to save these settings and create the new login.



The client login will be displayed in the Login list.

Now the application has permissions to manage its own databases on the SQL Server.

